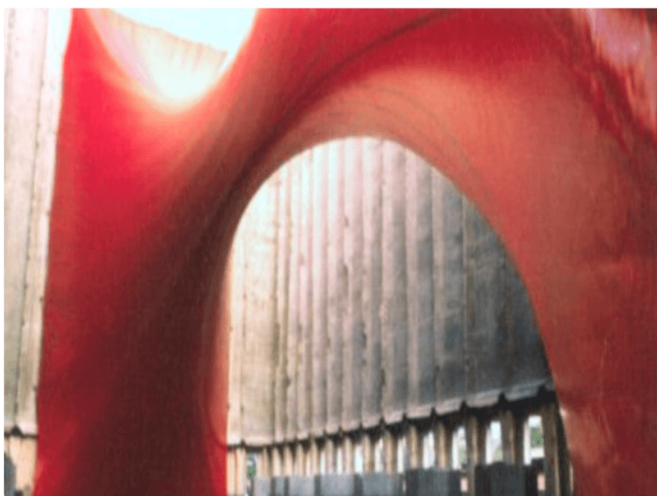
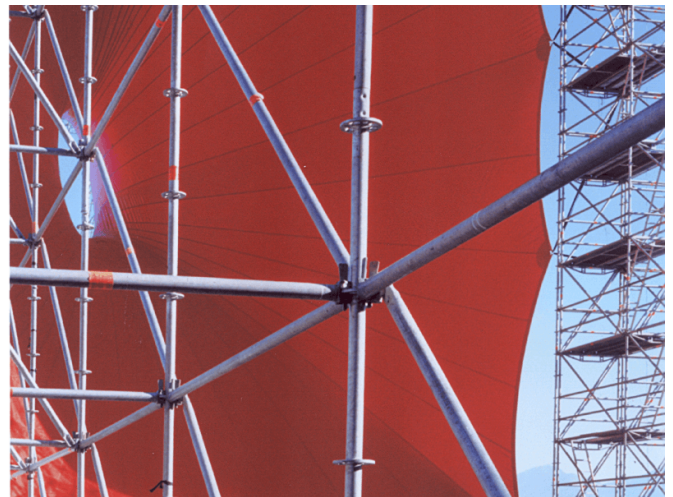
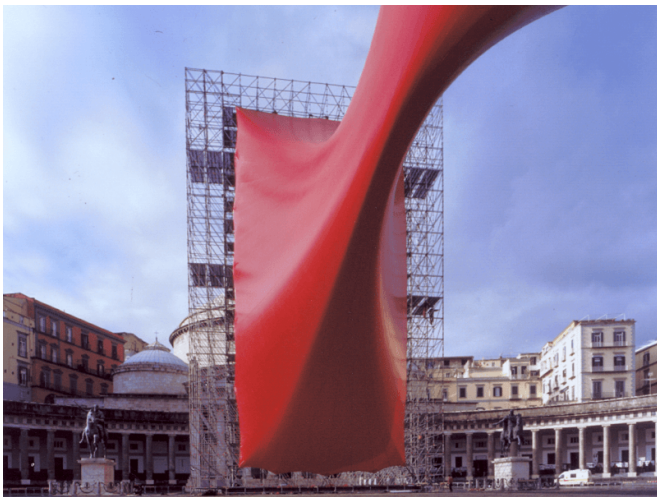


# TARANTARA BY ANISH KAPOOR



Even though BALTIC opened to the public in July 2002, the first BALTIC exhibition seen on the site of the building was

Tarantara by Anish Kapoor.

Tarantara formed part of B4B, BALTIC's pre-opening series of exhibitions and events. A site-specific installation by Anish Kapoor, Tarantara was commissioned specially for BALTIC before the construction of the new building began. Over 50m long and 25m wide, the work filled the shell of the Baltic Flour Mills and was installed for eight weeks and seen by over 16,000 people.

## KEY FACTS

**LOCATION:** United Kingdom

**STRUCTURES:** Frame Supported

**INDUSTRY:** Sculpture

**ROOF FORMS:** Conic

**MATERIALS:** PVC/PES